

**SPECIFICATIONS**

**Mechanical**

**Insertion Force:** 227gf max. Use 1.78mm Thickness Gauge  
**Separation Force:** 19gf min. Use 1.37mm Thickness Gauge  
**Durability:** 100 Cycles min.  
**Retention Force:** 0.40kgf min.

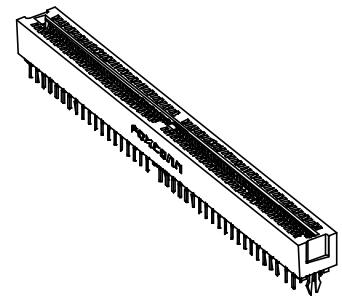
**Electrical**

**Current Rating:** 0.5A, 30 Rise above Ambient  
**Contact Resistance:** 30mW max. initial, 40mW max. after Test  
**Dielectric Withstand Voltage:** 500V min. at Sea Level  
**Pin to Pin Insulation Resistance:** 1000MW min.

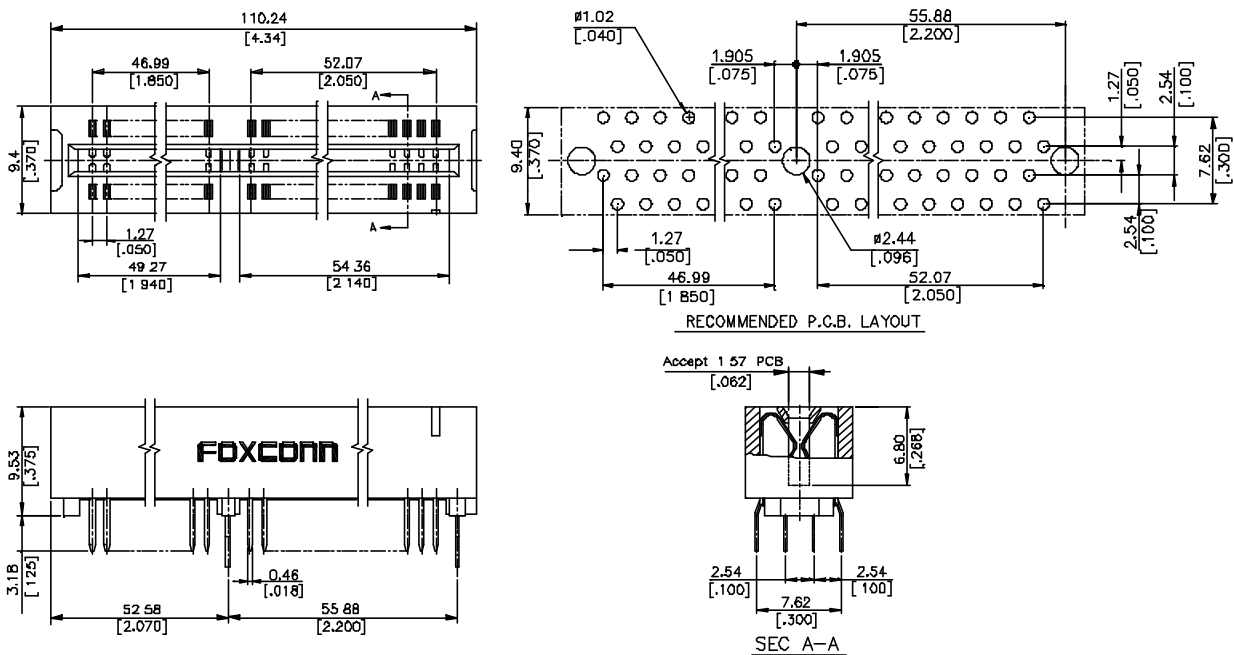
**Physical**

**Housing:** Thermoplastic, UL 94V-0 rated in Brown Color  
**Contact:** Copper alloy  
**Plating:** See "ORDERING INFORMATION"  
**Storage Temperature Range:** -55 to +85

**EG Series**  
**Vertical, T/H Type**  
**1.27mm [.050"] Pitch**  
**160 Pos.**



**DRAWING**



**ORDERING INFORMATION**

PRODUCT NO.: EG 0 80 0 \* - DPB - \*\*

Series Prefix 1.27 [.050] Pitch Low Profile MCA Card Edge Conn.	Termination Type 0=Straight	No. of Pos. 80=160 Pos.	Tail Length 0=3.18 [1.25]	Plating Type DN=Tin/Lead DF=Lead Free	Extension Code	Gold Plating 1=Gold Flash 3=30u" Gold 6=10u" Gold 7=15u" Gold
--	--------------------------------	----------------------------	------------------------------	---	----------------	---